



WITH **YOUTH**,  
THROUGH ADVERSITY

# ANNUAL REPORT 2021-2022 At a Glance

SidebySideYouth.org



**2,491**  
clients and family  
members served,  
60% increase  
since 2020-2021

**Time Spent  
with SBS Clients**

**14,352 hours**  
of clinical service

**97,645 hours**  
of therapeutic  
classroom time

**1,443 hours**  
of school-based peer  
support groups &  
classroom sessions



## Board of Directors

- Dale Satake, *President*
- Ricki Syufy, *Vice President*
- Tim Myers, *Treasurer*
- Howard Schomer, *Secretary*
- Danielle Adams
- Deanna Brock
- Barbara Carbone
- Juan Gonzalez III
- Jennifer L. Gotti
- Joy Phoenix
- Vamsey Palagummi
- Darwin Pangillan
- Ryan Stone

## Agency and Program Leadership

- Christine Isana Garcia, *Chief Executive Officer*
- Jamila McCallum, *Chief Program Officer*
- Karen Bischoff, *Director of Property and Risk Management*
- Benjamin Edoukou, *Director of Finance*
- Matthew Holt, *Regional Director, East Bay*
- Denisse Mendoza, *Regional Director, North Bay*
- Noelle R. Moss, *Director of Development & Communications*
- Tiffany Vigil, *Director of Human Resources*
- Jolene Yee, *Director, Irene M. Hunt School*
- Beatriz Behrens, *Program Director, Community Counseling North Bay*
- Jasmine Cervantes, *Program Manager, Our Space*
- Ahnjolique Haskins, *Program Director, Real Alternatives*
- Vernon Pope-Banks, *Program Manager, YouThrive*
- Laura Taylor, *Program Director, TAY Space*

**Editor** Noelle R. Moss

**Writers** Jennifer Golbus, Noelle R. Moss

**Photographers** Paige Green, Andrew Hida and Martha Cruz

**Designer** And Them

*On the cover: YouThrive client getting ready for a rafting trip*

## LETTER FROM CHRISTINE



Dear Friends,

It is a privilege to be writing to let you know about the impactful work that our Side by Side teams have done this year. The immense need for support and services continues to increase at unprecedented levels throughout the country. This past year has shown what the multiple impacts of pandemic, financial instability, the persistent threat of school violence, and climate change have done to our clients' lives, and what we must do to continue walking side by side with them.

**Side by Side served 60% more youth and families last year than in 2020-2021.** That growth is huge and due to both the ever-expanding need in our community as well as our programs' increasing reach and depth of services. But the acuity levels at which youth come into our programs have also increased. The learning loss, the isolation, and emotional upheaval due to the complications of our current environment draws on family resources that are already depleted. Caregivers and families who might have provided safety and security for their youth face their own struggles with job loss, housing insecurity, and an increased inability to put food on the table. You will read on pages 7-9 how our programs are addressing the unique and myriad complexities that youth in our communities now deal with.

Side by Side has itself confronted challenges that many organizations across the country continue to face in their workforce. The greater need for mental and behavioral health services – especially bilingual services – has meant that it has been more complicated to recruit much-needed clinicians, special education teachers, and staff. In short, the workforce supply has not been able to meet the intense demand. We have responded to this challenge by creating innovative solutions to attract dedicated and qualified talent. We have shifted the structure of some programs to allow for more efficient use of clinician hours and work so that we can serve more people. And we continue to increase cross-program collaboration so that our staff and clinicians can work across programs to support each other in their work, as well as in their continued resiliency.

Unprecedented times. How often have we heard the phrase to describe our world today? And yet, we do live in such unprecedented times. Our youth and their communities struggle to live through its complexities, even with Side by Side on their side. We are so proud to walk with them, day in and day out. Your support through these times has never been more critical. I am so grateful for your continued support in our mission and vision.

With gratitude,

Christine Isana Garcia, Psy.D.  
Chief Executive Officer

**Side by Side**  
300 Sunny Hills Drive, Bldg. 5  
San Anselmo, CA 94960  
Tel: 415-457-3200  
Fax: 415-456-4679

**SidebySideYouth.org**  
f sidebysideyouth  
@sidebysideyouth  
@sidebyside4kids  
Side by Side

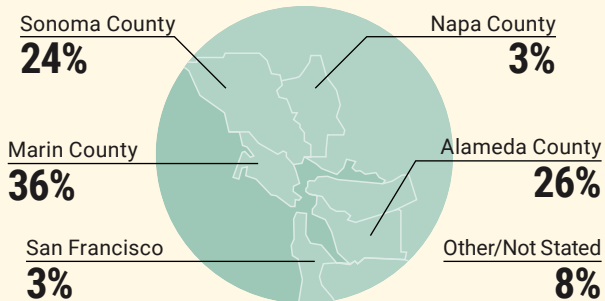
# A PORTRAIT OF SIDE BY SIDE

## WHO WE ARE AND WHO WE SERVE

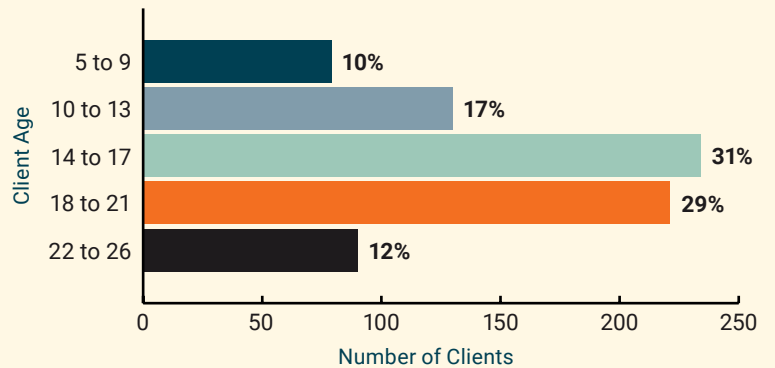
### CLIENTS AND STAFF BY ETHNICITY



### CLIENTS BY GEOGRAPHY



### CLIENTS BY AGE



Clients Served by Multiple SBS Programs: **8.9%**



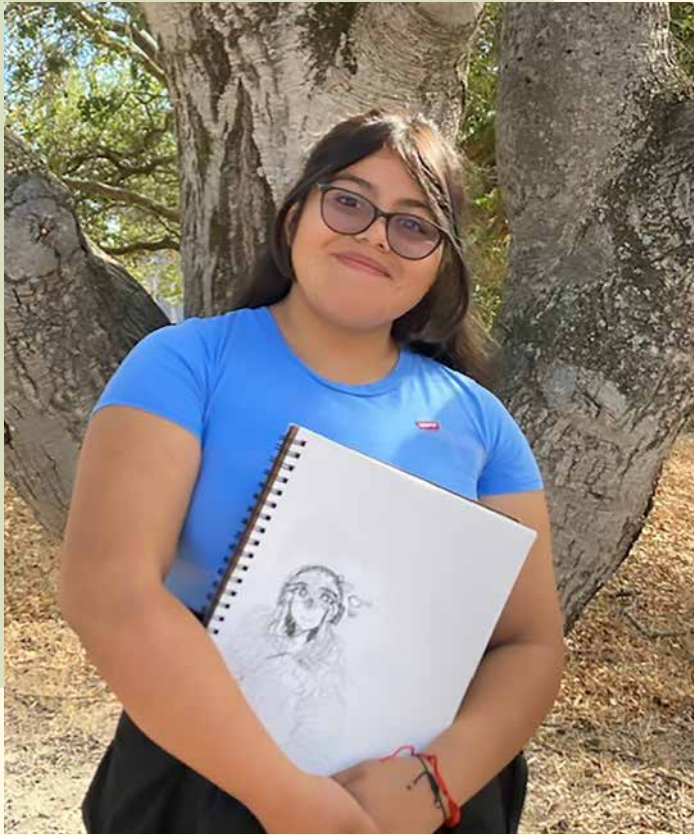
Clients who are Medi-Cal or Free/Reduced Lunch Eligible: **87.5%**



### DIRECT CARE STAFF

- 24** Clinicians & Case Managers
- 13** Youth Specialists & Advocates
- 13** Teachers & Behaviorists
- 22** Aides & Teaching Assistants

# PROGRAM HIGHLIGHTS



## COMMUNITY COUNSELING (Alameda, Marin, Napa and Sonoma Counties)

Young people and family members served this year:  
624 (North Bay) | 98 (East Bay)

*"It's been a good experience [working with Beatriz]. I know that the breathing exercises have helped me cope with my anxiety."*

- Lupita, Community Counseling

Funder

*"Side by Side has been a terrific partner for our Mental Health Talent Pipeline, a scholarship program for aspiring bilingual, bicultural mental health professionals to address the severe shortage in our region. Many students from the Pipeline have found meaningful work at Side by Side. We are grateful for the strong commitment that Side by Side demonstrates for our community."*

- Kim Bender, Executive Director,  
Healthcare Foundation Northern Sonoma County

## TAY SPACE Acute Emotional and Mental Health Services (Marin County)

Young people and family members served this year: 110

*"My meetings with Carla provide me with great relief given that they are confidential and I can express myself freely. It is also worth mentioning that TAY hosts really fun activities, and hanging out with them is very relaxing. They are a very respectful and sweet team of people, always looking for ways to help."*

*"Las reuniones con Carla son verdaderamente un alivio ya que se cuenta con total confidencialidad y uno puede expresarse de una manera muy amplia. Cabe mencionar tambien que las actividades que TAY realiza son divertidas; compartir de vez en cuando con ellos es muy relajante. Un equipo muy respetuoso y dulce, el cual siempre busca ser de gran ayuda."*

- Dennis, TAY Space client





# YOUTH RIVE

## K-12 Early Intervention & Prevention (Marin and Sonoma Counties)

Clients served this year through school-based group sessions: **116**

Youth served through community college sessions: **113**

Family members and additional youth served through general classroom presentations: **631**

*"When I am angry or sad, I have a place to be calm and happy with a teacher like you who is kind and a group that cares."*

- Itzel, YouThrive client

Funder

*"The movie theater industry is proud of our tradition of offering a young person his/her first job. NATO CA/NV is proud to support Side by Side because they are leaders in serving teenagers with behavioral and mental health issues, as well as providing interventions for LGBTQ issues, transitional housing and special education programs. We trust in Side by Side to help today's youth reach their maximum potential."*

- Todd Vradenburg, National Association of Theater Owners of California/Nevada

## IRENE M. HUNT SCHOOL Special Education (Marin County)

Young people and family members served this year: **290**

Average Length of Care: **2.4 years**

*"The Hunt staff respecting me and giving me a chance is what helped me the most. I didn't feel that in public school. The Hunt staff didn't act like they were above me or better than me, and always respected me. Staff looked past my challenges and did not assume that I was acting to get in trouble. I'm definitely going to miss the staff here the most."*

- Ethan, Hunt School student

*"When my son transitioned back to his neighborhood middle school, he did amazingly better than I could have expected. I equate that to his hard work, but also the foundation of all that he learned and the tools that he got from the Hunt School."*

- Robin, former Hunt School parent





## REAL ALTERNATIVES

### Transitional Housing for Foster and Probation Youth (Alameda County)

Young people and family members served this year: **95**

Average Length of Care: **18 months**

*“Real Alternatives has helped me accomplish my goals – I just successfully completed a semester of college! – and overall become a better person.”*

- Brianna, Real Alternatives client

Funder

*“The Bernard E. & Alba Witkin Charitable Foundation has supported Side by Side annually since 2012 because of the outstanding programs that Side by Side provides to transition age foster youth in the East Bay. These young people receive support for housing, mentorship, job training, and college-preparedness, which are all vital elements needed to become independent, fully-functioning adults in our Bay Area community.”*

- Ken Kuchman, Executive Director, Bernard E. & Alba Witkin Charitable Foundation

## OUR SPACE

### LGBTQIA+ Support (Marin and Alameda Counties)

Young people and family members served this year: **414**

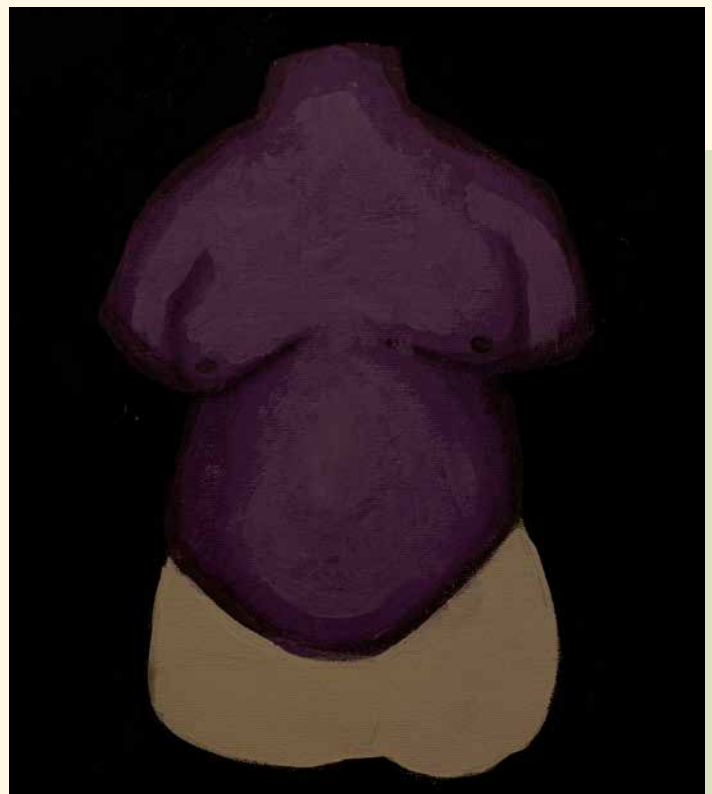
*“Our Space has helped me become more confident in my own body.”*

- Nancy, Our Space youth

Funder

*“The Sharks Foundation is proud to support Side by Side’s Our Space Program and the important work they do to serve vulnerable LGBTQIA+ youth. Now more than ever, youth need support and advocacy from their community and allies to embrace their authentic selves. We’re honored to be partners on that journey.”*

- Heather Hooper, Director of Social Impact, San Jose Sharks Foundation





THIS PAST YEAR, AFTER EXPERIENCING THE ISOLATION INITIALLY BROUGHT ON BY THE PANDEMIC IN 2020, SIDE BY SIDE PROGRAMS RESUMED MOST OF OUR IN-PERSON SESSIONS AND ACTIVITIES. HOWEVER, WE ALSO SAW A SHARP INCREASE IN THE NUMBER OF YOUNG PEOPLE AND THEIR FAMILY MEMBERS – 60% MORE THAN LAST YEAR – AS WELL AS IN INCREASE IN THE ACUITY OF NEED ACROSS ALL PROGRAMS. WHAT FOLLOWS IS A LOOK AT WHAT'S HAPPENING AND WHAT SIDE BY SIDE IS DOING TO ADDRESS THESE CHANGES.

## A YEAR IN REVIEW

### ADDRESSING THE ACUITY

**Community Counseling North Bay** has seen an incredible 40% increase in referrals over the last year. "The referrals just keep coming!" says Program Director Beatriz Behrens, and adds that the severity of need has also increased. "One client feels like five, especially for Spanish speaking families, where we often have repeat meetings for family members." North Bay Regional Director Denisse Mendoza also notes that her clinical staff offers telehealth services to folks who live out of the county and had hoped to find in-person services but were unable to. "Therapists are over capacity and often cannot take on new in-person clients. These people end up coming back to us three months after their first inquiry, saying they are now willing to do virtual therapy, but now the need is more severe because three months have passed." **Irene M. Hunt School** Director Jolene Yee has noted a similar trend. "The level of acuity was already on an uptick and then the pandemic happened and it all went into overdrive," she says.

For the vulnerable, transition-age youth (ages 16-25) served by **TAY Space** and **Real Alternatives**, “There’s definitely a higher acuity of need right now,” says Real Alternatives Program Director Ahnjolique Haskins. “We are really careful to assess each applicant and ensure that our team is equipped to meet these higher needs. If we feel our program is not the right fit, we carefully refer them elsewhere.” **TAY Space** Program Director Laura Taylor notes an increase this past year in the number of graduates who were readmitted. “The far-reaching effects of COVID have not dissipated. Youth who’ve graduated from our program are really struggling and reaching back out.” Taylor says that in general, the youth referred to TAY Space this year have been more acute. “Two came from a locked psychiatric facility and we’ve never done that before.” TAY Space Clinical Supervisor and Case Manager Erica Antonio says there’s also a huge uptick in substance use. “We used to have only 2 out of 20 clients that used, but now it’s more than half, with a handful that are severely addicted,” she says. “We are grateful that our on-staff psychiatrist is an addiction specialist who works to help these youth using an effective harm reduction model.”

“This year, we’re getting more schools asking about the **YouThrive** program, so that speaks to a greater need,” says Program Manager Vernon Pope-Banks. In addition to increased numbers, the mental health needs of YouThrive clients have also been more acute. Youth Specialist Angelica Montalvan says this past year she made referrals to Community Counseling on a daily basis. “We’re seeing a decrease in the mental wellness of our youth, so we’ve expanded our services to have more of a focus on mental health and clinical support.”

LGBTQIA+ youth are also seeking more help than in the past according to **Our Space** Program Manager Jasmine Cervantes. “Now that we’re back at schools and in person, a lot of youth are becoming aware of Our Space for the first time. The isolation they had to endure caused a higher intensity in their need. The silver lining is that we’re noticing these youth are actually asking for more help now. They are going to their teachers and saying, ‘I need to speak with a counselor.’”

### ADDING CASE MANAGEMENT SUPPORT

With such high intensity, Side by Side staff members across all programs have been jumping in to serve as case managers, even when their formal job descriptions don’t call for it. **TAY Space** reports an increase in time spent on case management from about 50% to 75% in the past year. “We used to do a lot more work on mental health and trauma recovery,” says Antonio. “Now it’s more survival and case management.” Housing is the #1 concern for TAY youth, with food a close second. Behrens agrees that she has shifted more to “survival mode” with many of her **Community Counseling** clients as well. “I’m finding I have to be a full holistic social worker instead of a mental health specialist,” she says. “Thankfully I can be resourceful and wear all those hats. It’s important because the social/emotional health of these youth won’t improve if all of these other pieces aren’t in place.” Mendoza says during her 10 years at Side by Side, she has not seen the need for case management to this degree.

Although it’s difficult to know why this uptick in acuity is taking place, Haskins believes that the systemic effects of the pandemic are still trickling down and affecting young people’s ability to navigate the systems supposedly in place to support them. “Everything takes longer to get done now,” she says. “For example, there is no longer an Alameda County liaison for Cal Fresh food stamps, so there is nobody



*Drop-in session at TAY Space*

to call. We run into similar hindrances with other services we connect our **Real Alternatives** youth with, such as employment support and long-term housing. Everything feels more difficult, and the youth become discouraged. We try to keep them motivated so they don’t give up.” Pope-Banks adds that with his **YouThrive** clients, many families are dealing with economic concerns such as unemployment. “When a parent loses a job, it puts a lot of pressure on the family, and can cause a lot of stress for a 16-year-old, who now has to decide if he’s going to get a job at McDonald’s to help support the family, or go to the streets.”

### DEEPENING FAMILY SUPPORTS

This higher need among our youth is causing increased stress for families as well. “There is so much worry,” says Yee. At a recent **Hunt School** IEP meeting, one mother spent the first five minutes discussing how much weight has been lifted off her shoulders now that her child finally has the services he needs. And at **Community Counseling**, families need more help than ever navigating the world of special education, in addition to the therapy being provided for their child. “Because of COVID, a lot has been delayed in terms of educational needs being met,” says Mendoza. “All across the Bay Area, schools are behind, and families are hitting a wall and don’t know how to create progress.” Behrens says the need is equal across English and Spanish-speaking families. “Across the board, there is a lack of understanding of how to advocate for their children in the school system. So I teach them how to get their voices heard.”

Pope-Banks is seeing the flip side of family stress among his **YouThrive** clients. “Unfortunately, we’re seeing a lack of parent involvement this past year,” he says. “A lot of families are dealing with economic issues, such as unemployment and homelessness. When they are distracted by their own troubles, they don’t get involved when their kids get in trouble. This creates apathy for the youth. They say, ‘If my parents don’t care, why should I?’” Workshops offered by YouThrive staff help facilitate greater parental involvement.



## ADDRESSING EXHAUSTION & BURNOUT

All of this is causing unprecedented levels of burnout and exhaustion. **Our Space's** Cervantes observes, "One thing we didn't understand was how much it would impact everyone to go back to in-person school without any additional resources. At first, it was hard to readjust, but now, we're hearing from the youth more and more, 'I'm just tired.'" An overall lack of motivation has become almost crippling. "I have one client who loves playing guitar, another who loves painting, and another who loves to dance," she says. "They all just stopped. Even thinking about getting back into those activities feels exhausting. It's easier to lay in bed and look at TikTok." Pope-Banks says he is seeing the same thing at **YouThrive**. "There's an overall lack of motivation, combined with higher levels of anxiety and depression. Youth feel so tired. It wrenches my heart to see them this way." And it's not just the youth. "The people who manage these safe spaces are also tired," notes Cervantes. "Public school teachers, administrators, counselors, case managers – they are all burned out."

Creative problem solving has always been a hallmark of the Side by Side team, and that muscle has been flexed this past year as we come together to find new solutions to help our youth during this time of greater need. **Our Space** has implemented "burnout sessions" where youth learn how to work through the burnout and exhaustion they are feeling. "The burnout sessions are really popular," says Cervantes, "but I also started Homework Days on Zoom three times per week to help youth who are falling behind in school. The goal during these sessions is to practice the skill of getting a little bit done every day. We talk at the end of the session about how it went and we celebrate every small win!" Drop-in groups throughout the week also provide a safe space for LBTQIA+ youth to connect with a caring adult, get help with homework, or connect to services they need.

**YouThrive** expanded mentoring and tutoring services this past year in response to the greater need. Youth Advocate Montalvan led study skills workshops, teaching tips and tools such as how to study and how to get work turned in on time. "For the last part of the session, students bring out their homework, practice the skills they just

learned, and receive help on their assignments," says Montalvan. YouThrive is currently working to build out the tutoring program and make it more robust next year.

## LOOKING FORWARD

A Capital Campaign at the **Hunt School** is underway to expand the high school program in order to meet the increase in referrals (find out more at [SidebySideYouth.org/hunt-campaign](https://SidebySideYouth.org/hunt-campaign)). One approach of Yee's solution for addressing the increased acuity of need for students is to focus on teamwork and collaboration. "We found that once we were all back on campus, we are able to naturally address each student's needs by creating an individualized plan for each student, holding weekly staff meetings to discuss each student and keeping each other informed. The trust, teamwork, and collaboration is what makes our program so effective."

**Community Counseling** is exploring the possibility of starting a group therapy program to augment the individual therapy currently offered. "Groups could really be beneficial to youth who are struggling with social isolation," says Behrens, "and it will also allow us to serve more youth without adding additional staff." For Spanish-speaking families, a change to assigning two therapists (an English-speaking therapist for the student and Spanish-speaking for the family), will help lighten the caseload for overworked bilingual clinicians. "I also want to empower the parents I'm currently working with to teach other parents how to navigate the educational system." Behrens adds, "If I give them the tools, they can go out and teach what they learned to other parents, and so many more families will be helped."

As former SBS Chief Program Officer Larry Woodland says, "We are still in the midst of a community trauma, we're seeing the aftermath of that experience. Our job at Side by Side is to ask the question, 'How do we move past the loss and uncertainty and burnout to pave the way to a new reality?'" We are deeply proud of our dedicated staff, who continue to walk side by side with our youth, every day. It's their unwavering commitment that shapes a better future for our youth and families and the communities where they will learn to thrive.



# HELP BUILD A BETTER TOMORROW THE HUNT SCHOOL EXPANSION CAPITAL CAMPAIGN

In 2021, Side by Side launched a \$1Million capital campaign to renovate and expand the Irene M. Hunt School, which serves K-12 students whose behavioral and emotional challenges are too great for their mainstream public schools. The school's current configuration lacks facilities for a more robust high school curriculum, school enrollment is limited due to available capacity in the classrooms, and there are not enough dedicated therapy spaces. Fortunately, two existing buildings on the San Anselmo campus are available to be renovated in accordance with current school building codes and more than address these challenges.

## YOUR INVESTMENT IN THIS CAMPAIGN WILL PROVIDE CRITICALLY NEEDED IMPROVEMENTS SUCH AS:

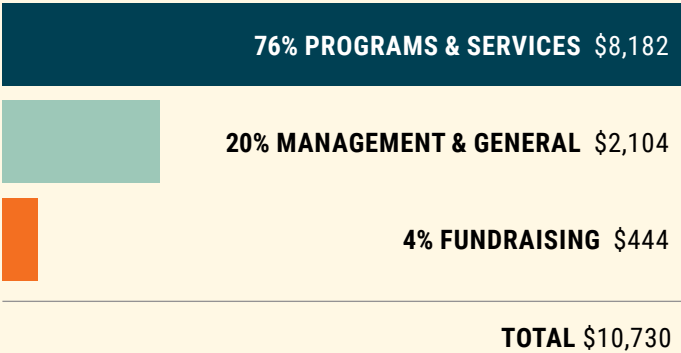
- Doubling the physical size of the high school classrooms
- Establishing a STEM lab and dedicated Art Classroom on par with the local schools the Hunt students will transition back to
- Accommodating additional middle and high school students to reduce the wait list for the Hunt School's services
- Creating a dedicated occupational and speech therapy room, individual therapy offices, more sensory rooms for students to regulate their emotions, and a conference room with video capabilities

Your support will have a deep impact on our students by significantly improving the school's facilities and enhancing the learning environment, better preparing students for their return to mainstream schools.

Learn more at [SidebySideYouth.org/hunt-campaign](https://SidebySideYouth.org/hunt-campaign).

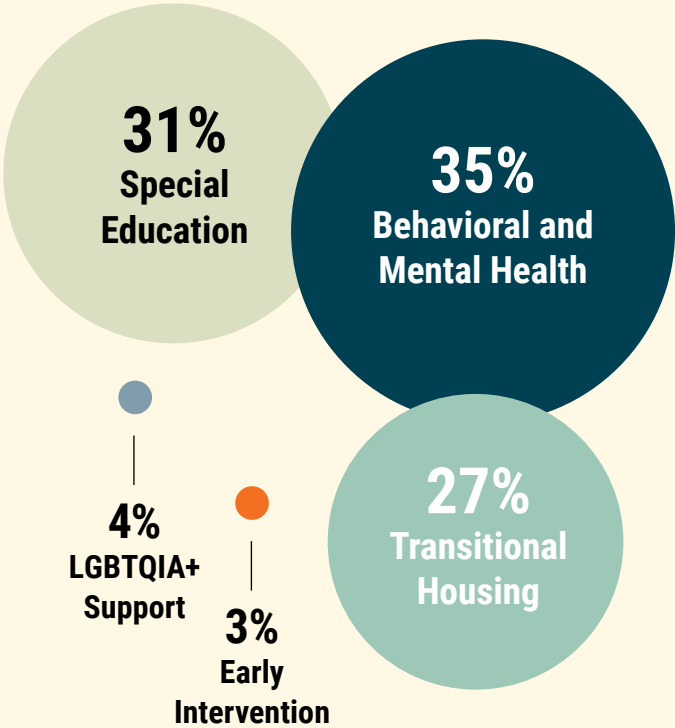
# FINANCIALS

## EXPENSES BY TYPE (% and 000's)

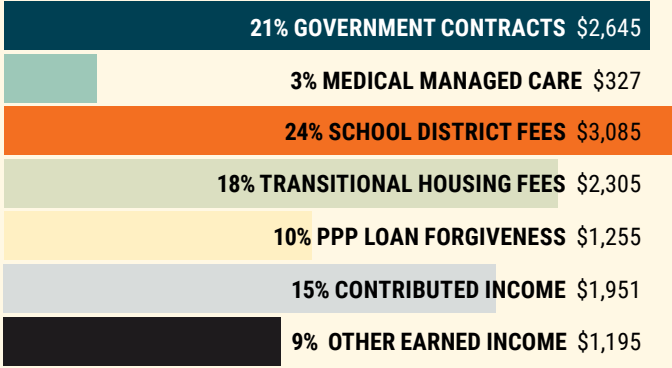


## EXPENSES BY SERVICE AREA (% and 000's)

(% and 000's)



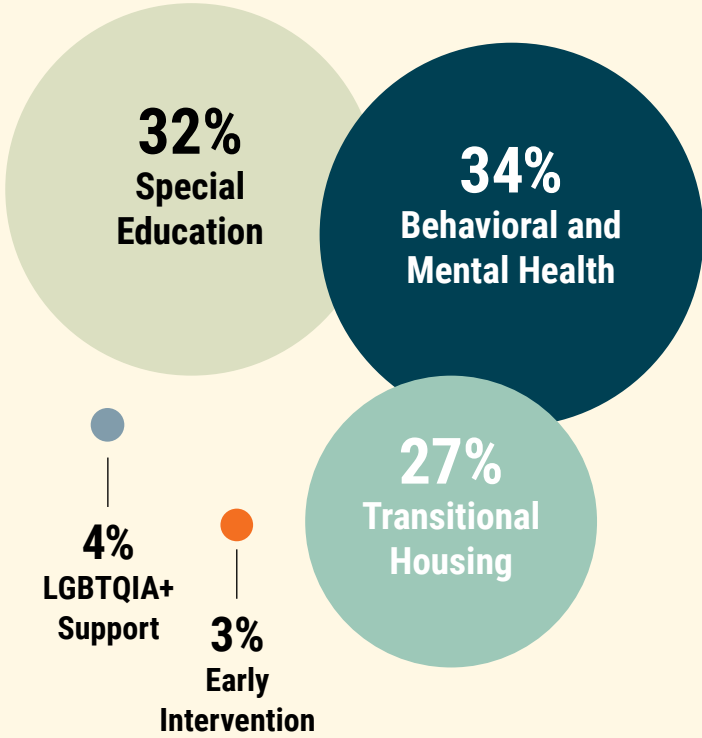
## REVENUE BY TYPE (%)



TOTAL \$12,763

## REVENUE BY SERVICE AREA (% and 000's)

(% and 000's)



## FINANCIAL POSITION

(000's)

Total Assets  
\$11,801

Total Liabilities  
\$5,324

Total Net Assets  
\$ 6,477



# THANK YOU FOR JOINING SIDE BY SIDE ON OUR JOURNEY.

The following generous supporters gave Side by Side cash gifts between July 1, 2021 and June 30, 2022. Each and every gift, no matter the size, enables us to walk with the Bay Area's young people impacted by adversity on their unique paths and provide the safe space most of them have missed in their lives. **Thank you.**

## \$75,000 +

Lois de Banzie  
J. Patrick Hunt & Frankie Hunt \*\*  
Elisabeth Levy \*\*  
The Raymond & Ricki Syufy  
Charitable Gift Fund \*\*

## \$50,000 - \$74,999

City of Healdsburg  
Timothy Murphy School

## \$25,000 - \$49,999

Bella Vista Foundation  
Five Bridges Foundation \*  
Healthcare Foundation Northern  
Sonoma County  
Kaiser Permanente Community  
Benefits - Southern Alameda  
Kaiser Permanente Community  
Benefits - Marin-Sonoma  
LaureL Foundation  
National Association of Theater  
Owners of CA/NV  
The Robert & Shirley Sanderson  
Fund of the Marin Community  
Foundation \*\*  
Jacqueline & David Spielberg \*\*  
Sutter Health North Bay

## \$10,000 - \$24,999

Anonymous (1)  
Arntz Family Foundation \*\*  
Bank of Marin \*\*  
Battaglia Family Charitable Fund \*\*  
Elizabeth E. Bettelheim  
Family Foundation  
The Eucalyptus Foundation  
Hobson/Lucas Family Foundation  
Mr. Charlie Clifford &  
Mrs. Holly Hopper \*  
IIDA Northern California East Bay  
Jonas Family Foundation \*  
Marin Community Service/  
Partners Funds  
Thomas & Susan Monahan  
Emily Morris & Javier Soltero  
The Jay Pritzker Foundation  
Bruce Raabe & Sara Wardell-Smith\*

George H. Sandy Foundation \*\*  
Dale Satake  
Sharks Foundation  
Sonoma County Vintners  
Foundation  
Jeffrey & Deborah Weber  
Bernard E. & Alba Witkin  
Charitable Foundation

## \$5,000 - \$9,999

Anonymous (1)  
AHS Foundation \*\*  
Arntz Builders  
Autodesk Foundation Employee  
Engagement Fund  
Barbara M. Burns Foundation  
Mr. & Mrs. Phil Byer  
Barbara Carbone & Gregg Lyman \*  
Mr. & Mrs. Eric Clothier \*  
The Elliott-Blank Family Fund  
Fenwick Foundation \*\*  
Filice Insurance Agency  
FIS \*\*  
Fullerton Family Foundation \*\*  
Ghilotti Construction Company \*\*  
Natalie & Louis Harrison  
Kaye Hiatt  
Jennifer & Chris Hogg  
In-N-Out Burger Foundation \*\*  
Bob Kaliski & Linda Nelson  
KCM Investment Advisors \*  
Dr. Catherine Kennedy &  
Mr. Daniel Grossman \*\*  
Scott & Erica Lindstrom-Dake  
Marin County Parks  
One Toyota  
Red Hill Shopping Center  
John Ricco  
Nancy & Richard Robbins \*\*  
Robert K. & Barbara Straus  
Family Foundation Inc. \*\*  
Sandia National Laboratories  
Speedway Children's Charities /  
Sonoma Raceway \*\*  
Darcy & Don Tarantino  
West Davis & Bergard Foundation \*

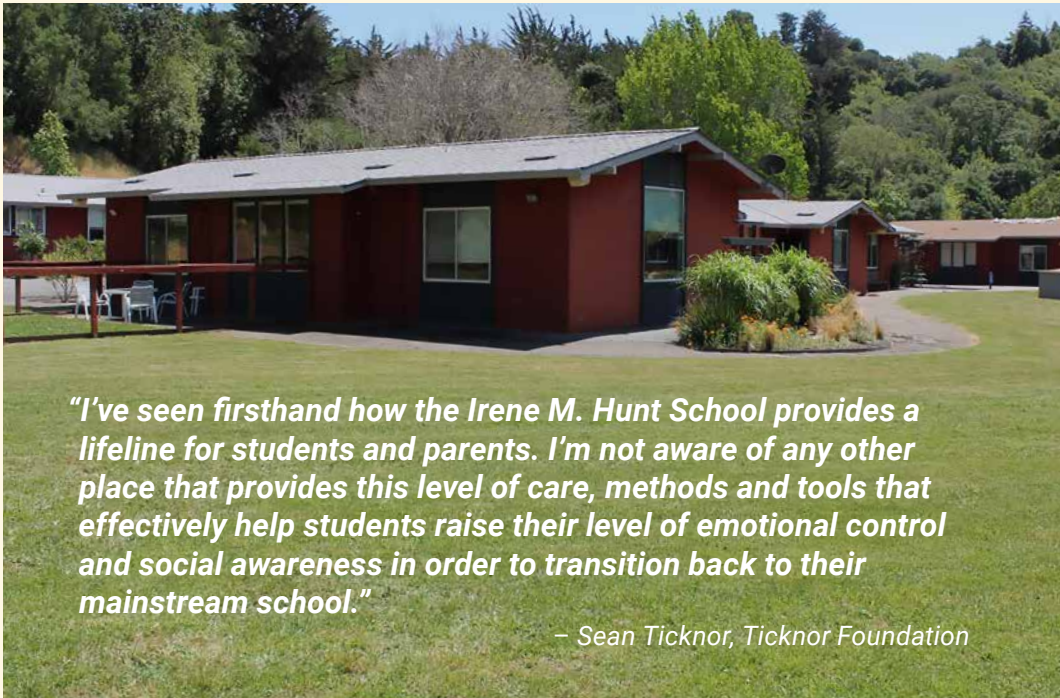
## \$2,500 - \$4,999

Anne Zepecki  
Belvedere Fund \*\*  
Lisa & Joel Bakamis \*  
Bay Area Physicians for  
Human Rights \*  
BioMarin Pharmaceutical, Inc.  
Bon Air - Greenbrae \*  
Deanna Brock & Daniel Freeman  
Wendy & John Buscaglia  
Chamberlin Family Philanthropy  
Lyndsey & Jimmy Conrad  
Mary Denton & Monte Deignan \*\*  
Julie & Chris Dolan  
First Republic Bank  
Jackson Fund of Community  
Foundation Sonoma County  
Jennifer Kaee & Paul Foxx  
Jennifer L. Gotti \*\*  
Julia L. Grant Donor Advised  
Fund of CFSC  
Marti & Tony Grimminck  
Nannette Griswold \*\*  
Jim Hale  
Nicolle Henneuse \*  
Julie & John Hullverson  
Sally & Mark Jaeger  
Kathlyn McPherson Masneri &  
Arno P. Masneri Fund \*\*  
Mr. & Mrs. Larry Klaustermeier \*\*  
Marco A. Vidal Fund \*\*  
Martz Accountancy Corporation  
Shannon & Taggart Matthiesen  
Robert & Suzanne McLennan \*\*  
Glenn & Dayna Meyers  
Tim & Oksana Myers  
Relevant Wealth Advisors, LLC \*  
David & Tonia Rubin  
Safeway Foundation  
Kimberly Rochat &  
Howard Schomer  
Kerri Schultze  
Shelley & Company  
Ryan Stone  
Ticknor Foundation  
Maureen & T.J. Truitt  
Venable Foundation  
Barbara Ward \*\*

Daniel & Martha Wenzel  
Candy & Brian Wilson \*

## \$1,000 - \$2,499

Ron & Allison Abta  
Sara Aksdal-Jansen  
Almaden  
Seth & Amy Barad \*\*  
Paula & John Beritzhoff  
Brown Advisory  
Justin Burt \*  
Hugh & Luanne Cadden  
Jay & Shelley Cahan \*  
Lydia & Tony Cameron \*\*  
Sue & Joe Carlomagno \*\*  
Center for Volunteer &  
Nonprofit Leadership \*\*  
Mr. David Clayton &  
Ms. Gayle DeKellis \*\*  
Clover Stornetta Farms, Inc. \*\*  
Leslie & Richard Cohen \*\*  
Russ & Lynn Colombo \*  
Cornell Charitable Fund  
Josh & Monique Corren  
Erickson Family Fund \*\*  
Susan & Geoff Flint  
Flynkings Fund of Horizons  
Foundation  
David Frym  
Lisa Garaventa, Golden Gate  
Sotheby's International Realty  
Christine Isana Garcia  
W. Robert Griswold Jr. &  
Alexandra Griswold  
Lillian & Robert Hames  
Mr. & Mrs. Steve Hays  
Dr. Andrea Hedin & Peter Fisher  
Hennessy Funds \*  
The Hobson Family Foundation  
Jay & Wendy Huck  
The Kawaja Family  
Keyes Family Trust \*\*  
Gordon Kramer  
Tommy Lamagna &  
Shannon Kruger  
Mr. & Mrs. Mark Kruttschnitt \*  
Elizabeth Kulavic \*\*  
Terri Kwiatek \*\*  
Carrie Lambert



*"I've seen firsthand how the Irene M. Hunt School provides a lifeline for students and parents. I'm not aware of any other place that provides this level of care, methods and tools that effectively help students raise their level of emotional control and social awareness in order to transition back to their mainstream school."*

*– Sean Ticknor, Ticknor Foundation*

The William & Carol Bryan Charitable Fund  
 Bruce Carlson  
 Brandon & Lilia Carney  
 Diane E. Carr ◦  
 Michelle & Kelly Coffey  
 David Cuneo  
 James & Judy DeVries  
 Ben Edoukou  
 Joyce Feeney  
 Kelli & Chase Fontaine  
 Christina & Smith Forte  
 Jeannine Freeman  
 Nicole Friedland  
 Richard Ghilotti \*  
 Sharon Gillars  
 Darlene & Vernon Goins ◦  
 Ms. Janet Hayward  
 Raynelle Heidrick  
 Michele Helm & Dr. Frank Helm  
 Diana & Jeffrey Hill \*\*  
 Mr. Morgan Beatty & Mrs. Winnie Huff \*\*  
 Terry Kessler & Francine Halberg  
 Chris Kughn  
 Peggy & Scott Maclise  
 Maya Mancuso  
 Mr. & Mrs. William McDevitt \*\*  
 Kate & Wes Mitchell \*\*  
 Cindy Molina  
 Angelica Montalvan  
 The Thomas & Susan Moore Family Fund of the Ayco Charitable Foundation \*\*  
 Sally Newson \*  
 Ashy Obergfoll  
 Ann & Tom O'Gorman  
 Alyssa O'Hare  
 Mr. & Mrs. Mike Pelfini  
 Maria Pitcairn \*\*  
 Amy Schlueter  
 Andrea Schultz  
 Christine Scott \*\*  
 Mr. Donald Simon, Jr.  
 Shelagh Smith Giving Fund  
 Amy Storek  
 Ben & Kristen Swann  
 Steven & Jacqueline Tulsy \*\*  
 Edward Vanderpriem  
 Margaret Vaughan ◦  
 Peter White  
 John & Kathy Woldrich \*\*  
 Wendy Xa  
 Donald Young & Susan Young

Chuck Grieve & Deanne LaRue  
 Rob Lynch  
 Marin Charitable \*\*  
 Marin Roto-Rooter \*  
 Tom Martz \*\*  
 Deborah N. Matthies \*\*  
 Montecito Marketplace Associates \*\*  
 Mutual of America \*\*  
 Barbara Nelson  
 Ed Nessinger  
 Scott Nikas  
 Novick Family Charitable Fund \*\*  
 Mr. & Mrs. Thomas Obletz \*  
 Mr. & Mrs. Don O'Brien  
 Linda & Michael Perrella \*\* ◦  
 Mr. & Mrs. James Phoenix \*\*  
 Margaret & Nicolas Pierattini  
 Edward Pollak Family Fund \*\*  
 Providence  
 Lisa Rapoport & John Freeman  
 Bill & Jenny Reilly  
 Karla Rivera Cervantes & Ernie Cervantes  
 Robert H. Greene Real Estate \*  
 Robison Family Foundation \*\*  
 Craig & Carol Rossi  
 The Bel Russell Family Schultz Foundation \*\*  
 Mr. & Mrs. Mike Schwartz \*\*  
 Perry Seto  
 Jennifer & Mike Shepard \*\*  
 Cherie Sorokin  
 The Grateful Dog Inc  
 The Heck Foundation  
 Tara & Sean Ticknor  
 Mr. Richard Ugarte  
 Union Bank  
 Mike & Sandra Van Metre  
 Vivalon  
 W. Bradley Electric, Inc. \*\*  
 Wells Fargo Community Support / United Way Campaign \*

Westamerica Bank \*\*  
 Katherine Woolard  
 Mike & Kari Zazzara  
 Suzanne L. Zimmerman Charitable Fund \*\*  
**\$500 - \$999**  
 Anonymous  
 Alten Construction \*\*  
 Sidney F. Baker \*\*  
 Al Baylacq  
 Todd & Julie Boes  
 Ema Davila & Dave Bromberger  
 Jean & Stuart Brown \*\*  
 Ms. Joan Brown  
 Kim Burnett  
 Ryan Buxbaum  
 Cardiovascular Associates of Marin & SF Medical Group, Inc. \*\*  
 Claudia Carlson & Jack Brenneman \*\*  
 John Castro \*  
 Chevron Matching Gift Program \*  
 John & Catherine Chiosso  
 Cassia Crall  
 d'Alessio Family Fund \*\*  
 Marita & Kevin Daly \*\*  
 Elizabeth Drummey Communications  
 Meredith Etherington  
 Dianne Fowler \*\*  
 Lori Frugoli \*\*  
 Charles Gardiner  
 Emily Grossman & Daniel Philpot  
 Rebecca & Ray Hathorn \*  
 Joe & Cara Hunt \*\*  
 Tom & Diane Johnston \*\*  
 K2 Promotions Custom Swag  
 Keegan & Coppin Co., Inc. \*\*  
 Mr. & Mrs. Stuart Keirle \*\*  
 Barbara Kirk  
 Stephanie Lamarre, Golden Gate Sotheby's International Realty

Lynn Larsen  
 David Lechuga  
 Hilda Leon  
 Nick Lynam  
 Marin Lodge No. 200 I.O.O.F. \*\*  
 Mr. & Mrs. Joseph Martino \*\*  
 Simon McBride & Jasmine Gavam  
 Purple Lady/Barbara J. Meislin Fund \*\*  
 Camila Luz Mize  
 Noelle R. Moss  
 Kathleen Noland  
 David Penney  
 Debbie & Thomas Piliero  
 Mr. Jim Poindexter  
 Ashley & Corey Preston  
 Mark Ricco  
 Mr. & Mrs. Harvey Rich \*\*  
 Salesforce.com  
 Ricardo Segura  
 Karen Seratti & Kevin Asbra  
 Mercedes Shinohara-Taylor ◦  
 Carole & John Shook \*\*  
 United Markets \*\*  
 Rebecca VanHorn  
 Robert Verhoeff \*  
 Voyager Consulting  
 Mr. & Mrs. Rich Walcoff ◦  
**\$250 - \$499**  
 Anonymous (3)  
 Todd Aldrich  
 Terry & Dale Aman \*  
 AmazonSmile Foundation  
 Joel Backman  
 Jessamy Barker ◦  
 Leslie & James Barker \*\*  
 Howard & Marilyn Belove  
 Mr. & Mrs. John Bessolo, III \*  
 Karen Bischoff & Ed Boisson \*\*  
 Sue & Pete Bowser \*  
 Otis Bruce

**\$100 - \$249**  
 Anonymous (3)  
 Abbott Laboratories Fund  
 Jenna Ackman  
 Jim Allen  
 Pat Allen  
 Rhi Alyxander  
 Para & Amit Ambardar  
 Apple  
 Mario Arteaga & Cindy Arteaga  
 Becky & Peter Bailey  
 Steve Ballard  
 Brad Barnes  
 Katherine Barrass \*\*  
 Dr. & Mrs. Basso \*\*  
 Charles & Diane Bates \*\*  
 Robert Beadle  
 Kim Belshe  
 Cindy & Bernie Benson \*\*

Berardi Family  
 Boo Boero \*\*  
 Stacey Bosick  
 Lito Briano  
 Linda Cosgrove & Perry Burr  
 Joan Cahill  
 Mr. Matt Cappiello \*  
 Daisy Cardenas  
 Reid & Barb  
 Lea Casini  
 Tom Cawley  
 Jasmine Cervantes  
 Christ the Good Shepherd  
 Lutheran Church  
 Linda & James Christensen  
 Cynthia Clark  
 Alice Cogliandro \*\*  
 Betty Cohen  
 Mr. Mel Cohen & Mrs. Lorraine  
 Fingerson-Cohen \*\*  
 Nora Cooper  
 Martha Cruz  
 Hannah Culver  
 Stephen Daniels  
 Pete & Judy Dardis  
 Howard Daulton  
 Edgar & Kaitlyn De Luna  
 Deetken Family Trust \*\*  
 Justine Delio  
 Mr. Steve Duditch  
 Electronic Arts  
 Maeve End  
 Allison Fletcher  
 Erdmuth Folker \*\*  
 Marina Gavam  
 Juan & Evelyn Gonzalez  
 Ms. Kiki Goshay \*  
 George & Joanne Greco \*\*  
 Mr. Fred Greene  
 Charles Grieve  
 Michael Haney  
 Ahnjolique Harris  
 Michael & Elizabeth Hatfield  
 Charitable Fund \*  
 John Heliotis  
 Mark & Dale Hillard \*\*  
 Karen I. Hirsch & James A. Condit  
 Matthew Holtz & Jacob Loyar \*\*  
 Doug Hood  
 Barry Hovis \*  
 Tom Hunter  
 William W. Jones \*\*

Kaiser Permanente Community  
 Giving Campaign  
 Yuliya & Reed Kathrein  
 The Stephen & Julie Kimball  
 Charitable Fund \*  
 Kim & Keith Laidlaw  
 Enoch Lam °  
 Leon Lee  
 Marcela Lembi  
 Amanda Lewis  
 Life by Design Therapy  
 Sarah Liu °  
 William & Paula Jean Loeffler  
 Ms. Shay Loftus \*\* °  
 Lawland Long  
 Sonya Lopez °  
 Charles Louderback &  
 Miranda Wagner  
 Heather MacDermott  
 Carole & Bruce MacPhail \*\*  
 Ms. Bonnie Manning \*\*  
 Charles Massie  
 Wes Mayne \*\*  
 Mr. & Mrs. Charles McBride \*  
 Dan Mchugh  
 The Mettner Family Trust \*\*  
 Bonnie Meyer  
 Dani Sheehan-Meyer & Fred Meyer  
 Lois & Bruce Moody \*\*  
 Doug Mowbray  
 Chelsea Murawski  
 Jennifer Murray °  
 Dennis Neary \*  
 Jake Nguyen  
 Mr. & Mrs. Frank Noonan  
 Tim & Barbara Norman  
 Jessica O'dea-Bumanglag  
 Ernesto Olivares  
 Mr. & Mrs. Dennis O'Neill \*  
 Mr. & Mrs. Jeffrey O'Neill \*\*  
 Mr. Peter Oser \*  
 Sven Ostling  
 Rev. Betty Pagett \*\*  
 Mike Pardini  
 Ji Park  
 Mr. & Mrs. Richard Parker \*  
 Mr. & Mrs. Paul Pastorino  
 Amelia Patrice  
 Bob Paul  
 Janet & Robert Pawlan \*\*  
 Peter & Nina Perl °  
 Pam Pitts \*\*

Allan Rappaport Charitable  
 Foundation  
 Emily Ritzo  
 Ken Roberts  
 Yvonne Roberts  
 Deborah Rodman  
 Jodie Ruland  
 Beth M. Ryan  
 Trista Samole  
 David Scafani  
 Dick Schultze  
 Carole & Douglas Sheft \*\*  
 Evan Shen  
 Nicolette Sloan  
 Richard & Rebecca Smith  
 Giving Fund \*\*  
 Craig Squires  
 Hannah & Joe Stefanoni  
 Craig Sundstrom  
 Tom & Rebecca Sylla \*\*  
 Ms. Laura Taylor \*\*  
 Sally S. Taylor \*\*  
 Jack Terrell  
 Mari & George Tischenko  
 Judy Torrison \*\*  
 Chantille Tran  
 Christina Van Winkle  
 JP Van Zee  
 Tiffany Vigil  
 Erin Vilorio  
 Lorraine Voskanian  
 Julianne Wilhelm °  
 Lauren Willis °  
 Larry & David Woodland  
 Jolene & Jeff Yee

**\$50 - \$99**  
 Anonymous  
 Mike & Janis Ahern  
 Sharlyne Balano \*\*  
 Vivian Bauer \*  
 Claudette Bidgood \*\*  
 Mary Bramblett  
 Peter & Ione Breen \*\*  
 Danielle F. Brinner  
 Lynn Brown °  
 Donna Bruckner  
 Delaney Burk °  
 Phyllis & James Byrne  
 Bill Cahill  
 Anna Cecchini °  
 Catherine & Don Chase

Andrea & Caben Chester °  
 Mr. & Mrs. Stephen D. Combs \*\*  
 Colonel Cope \*\*  
 Mary Anne Cowperthwaite \*\*  
 Tony & Annette Davary  
 Members of the BLACK@Gap Inc.  
 Employee Network  
 Hannah Eaves  
 Mr. Andrew Eber  
 Shirley Ehrlich  
 Ms. Deborah Erwin  
 Ruth Falkenberg \*\*  
 Mr. Jeffrey Felix &  
 Ms. Bonnie Rottier \*\*  
 Madeline Fendler  
 Kate Fitzsimmons  
 Lorie Frost  
 Gap Foundation Gift Match \*\*  
 The Gibson Family \*\*  
 Mr. Dirk Godsey  
 Robert Gollan \*  
 Robert H. Greene Real Estate  
 Paul & Debra Guerin \*\*  
 Ms. Karen Halvorsen \*\*  
 Ms. Inge Hendromartono  
 Lisa Hsia  
 Ingrid Keir  
 Jean Ann King  
 Cari L. Pace Koch & Bob Koch \*\*  
 Jamie Kofoed  
 Mr. & Mrs. Stephen Levinson \*\*  
 William Lin  
 Patricia Lufitano  
 Carleton MacDonald  
 Susan MacMillan  
 Jan Maisel, M.D. \*\*  
 Laura & Michael Malone  
 Tren & Kathleen Meyers  
 Sydney Miller  
 Kathleen Mullen \*  
 Joe Murphy  
 Lilian Murray \*\*  
 Bea Newhall \*\*  
 Kyle Nicholson  
 Troy Niday  
 Kathleen Parker \*  
 Margaret Paula \*  
 Tracy Perlich  
 Ric Rascoe  
 Ms. Lucinda Ray & Charles Little  
 Mr. & Mrs. Mark Rubinstein \*  
 Graham Russell



***“The Grateful Dog is committed and honored to support Side by Side – organizations who help children (and animals) are near and dear to us. The tailored, robust programs Side by Side delivers are invaluable and effective in providing the launching pad these kids need to overcome adversity and succeed.”***

*– Karla & Ernie Cervantes, The Grateful Dog*

**“Side by Side has done a tremendous job offering housing, mental, and behavioral health services to transition-age foster youths through its Real Alternative program. We are very supportive of this program because it reaches a group of youths in our community who normally ages out of the foster care system and left to fend for themselves with little to no support.”**

– Michael W. Bigley,  
Director, Venable Foundation

Artwork by Raylena, Real Alternatives client

Mr. & Mrs. Joseph P. Russoniello \*\*  
Yvonne Sasse \*\*  
Maxine Sattizahn  
Kay Schmitt \*\*  
Janace & Bill Shields  
Mr. & Mrs. John Smith \*  
Ruth & Larry Stotter \*\*  
Judith Wilson \*\*  
Joan M. Wright \*\*  
Steven Zolno

#### GIFTS IN HONOR OF

“Back to School”  
Carter O. Belove  
Mary Denton  
Mary Eschen  
Olga Gorton  
Carie Harris  
Catherine Kennedy  
Marcela S. Lembi  
Sue Merriman  
Kat Milberger  
Hayden Rubin  
Irene M. Hunt School  
Side by Side Staff  
Ricki Syufy  
Robert Vaughan  
Jolene Yee

#### GIFTS IN MEMORY OF

Carter O. Belove  
Joan Capurro  
Helen Dennis  
Virginia Sylla Egan  
Mary Eschen  
Devora Harrison  
Aaron Jones  
Larry  
Norma Miller  
Kenneth Nelson  
Marian Rossi  
Dolly Torrison  
Robert Vaughan

#### VEHICLE DONATIONS

Amelia Patrice

#### GOVERNMENT CONTRACTS & GRANTS

Alameda County Department of Child & Family Services/Youth Acceptance Collaborative  
Alameda County Behavioral Health Care Services  
Beacon Health Services  
County of Marin Behavioral Health & Recovery Services  
County of Sonoma Family, Youth and Children’s Services  
Kaiser Permanente – Northern California  
Napa County Health & Human Services

#### EDUCATION PARTNERS

Berkeley Unified School District  
Caliber Beta Academy  
College of Marin  
Davidson Middle School  
Five Keys Schools and Programs  
Hayward Unified School District  
Healdsburg Unified School District  
Larkspur-Corte Madera School District  
Mare Island Technology Academy  
Marin County Office of Education  
Miller Creek Unified School District  
Mill Valley Unified School District  
Novato Unified School District  
Petaluma City Schools District  
Roseland School District  
Ross Valley Charter School  
Ross Valley Unified School District  
San Francisco Unified School District  
San Rafael City Schools  
Santa Rosa City Schools  
Santa Rosa Junior College

Sausalito/Marin City School District  
Shoreline School District  
Sonoma County Office of Education  
Tamalpais Union High School District  
Vallejo City Unified School District  
West Contra Costa Unified School District

#### LEGACY GIVING SOCIETY

Side by Side’s Legacy Society honors those individuals who have thoughtfully included our agency in their estate plans. By designating a legacy gift to Side by Side, the services and programs that they support will continue to touch the lives of our clients for years to come.

Anonymous (3)  
Kathryn L. Black & Todd Sparks  
Virginia Bertelsen  
Sue Clark  
Diana & Jeffrey Hill  
Elizabeth Johnson  
William Jones  
Russ & Kathy Ketron  
Carole & Bruce MacPhail  
Nora J. McCallie  
Mr. & Mrs. Richard K. Robbins  
John B. Robinson  
Robert & Shirley Sanderson  
Mary Tash  
Cathy Tucker  
Charles Walters

#### GUILD MEMBERS

The Guilds of Side by Side formed the backbone of support for our agency for decades. From community fundraisers to the Grape Festival to birthday treats for the Irene M. Hunt School, the Guilds have historically been integral to our organization. We are honored to recognize the Glenwood Guild below for their continued advocacy and commitment to the young people that we serve.

#### ACTIVE MEMBERS

Gill Keirle, *President*  
Linda Christensen  
Alice Cogliandro  
Margaret Erickson  
Ruth Falkenberg  
Carole MacPhail  
Barbara Metzger  
Bea Newhall  
Joy Phoenix  
Maggie Polan  
Terrie Reyes

#### SUPPORTING MEMBERS

Joyce Anderson  
Kathy Barrass  
Sue Moore  
Anne Nelson  
Vivi-Anne Regstad  
Kay Schmitt  
Jan Smith

#### IN-KIND DONORS

101 Surf Sports  
3 Badge Beverage Corporation  
Addictive Coffee Roasters  
Alameda Comedy Club  
Albertson’s  
All-American Printing Services  
Amici’s East Coast Pizzeria  
Ashley Morgan Designs  
Asian Art Museum  
Aviator Nation  
Baked Blooms  
Balletto Vineyards  
Bank of Marin  
Amy Barberi  
Barrel House Tavern  
Bay Area Wine Company  
Bayonet & Black Horse Golf Courses  
Belinda Wickwire Jewelry  
Berkeley Bowl West  
Blue Waters Kayaking  
Boisset Family Estate  
Brewsters Beer Garden  
Brix Restaurant  
Deanna Brock & Daniel Freeman  
Jesse & Joni Brown  
Cheryl & Todd Brown  
Wendy & John Buscaglia  
Lori & Phil Byer  
Cakes4Kids  
Capital Genealogy  
Barbara Carbone & Gregg Lyman  
Cascade Method  
Charles M. Schulz Museum  
Chomps  
Clif Family Farm  
Comforts  
Lyndsey & Jimmy Conrad  
Cooley LLP  
Costco Wholesale  
County of Marin – Department of Cultural Services  
DC Metal Works  
Mary Denton and Monte Deignan  
Duckhorn Vineyards  
Dukes and Dolls Salon  
Dutton-Goldfield Winery  
Eatwell Farm  
Elk Fence Distillery  
Farm Fresh To You  
Folio Fine Stationery & Gifts  
Fortunati Vineyards  
Fresh Victor  
Frog Hollow Farm  
Gaby Garcia  
Glenwood Guild  
GoGo squeeZ  
Golden Gate Bridge Highway & Transportation District  
Good Earth Natural Foods, Inc.  
Goodwipes  
Gott’s Roadside  
Gravenstein Grill  
Kathleen Greco  
Donna Gregaru  
Griffo Distillery  
Dani Grindlinger  
GU Energy Labs  
Heffernan Insurance Brokers  
Hiller Aviation Museum  
Hog Island Oyster Company, Inc.  
Brad Honsberger  
David & Trudi Hummel  
Katie Hyde

Indian Valley Golf Club  
 Insalata's  
 International Orange  
 Jacuzzi Family Vineyards  
 Jambar  
 Jelly Belly  
 John & Jill's Cheesecake  
 Judd's Hill Winery  
 Buck Kamphausen  
 Kelleher Family Vineyard  
 Kendric Vineyard  
 Kentfield Fire Protection District  
 Kids Bike Lane  
 Jean Ann King  
 Lydia Knight & Kevin O'Riordan  
 Korbel Champagne Cellars  
 Krutz Family Cellars  
 La Toscana Ristorante & Bar  
 Lagunitas Brewing Company  
 Little River Inn  
 David & Carole Lloyd  
 Lloyd Cellars  
 Love Story Yoga  
 Madcap Restaurant  
 Marin Ace Hardware  
 Marin Country Club  
 Marin Independent Journal  
 Marin Landscape Materials  
 Marin Magazine  
 Martin Ray Vineyard & Winery  
 Matt and Jeff's Carwash  
 Bonnie Meyer  
 Michael Merrill Design Studio  
 Mighty Pilates  
 Morton & Bassett Spices  
 Peggy Moseley  
 Noelle R. Moss  
 Ellen Muir  
 Navitas Organics  
 Scott Nikas  
 North Bay Business Journal  
 Nugget Markets  
 Oakland Zoo  
 Pacific Pinball Museum  
 Peacock Gap Holdings

Peju Province Winery  
 Mr. and Mrs. James Phoenix  
 Rebecca Pinnell  
 Point Reyes Farmstead  
 Cheese Company  
 Janet Pollack  
 Preferred Sonoma Caterers  
 Presidio Bowling Center  
 Project Linus of the North Bay  
 Ram's Gate Winery  
 John Ricco  
 Rodney Strong Vineyards  
 Mark & Pam Ross  
 Russian River Vineyards  
 San Francisco Giants  
 Community Fund  
 San Francisco Zoological Society  
 Dale Satake  
 Kimberly Rochat & Howard Schomer  
 Schumacher Photography  
 Scoma's Sausalito  
 Seeds And Soul Club  
 Shelley & Company  
 Shineology Car Washes  
 Six Flags Discovery Kingdom  
 Sloat Garden Center  
 Sonoma Portworks  
 Sun First Solar  
 SusieCakes  
 Swirl San Anselmo  
 Raymond & Ricki Syufy/Syufy  
 Enterprises  
 Syufy Enterprises  
 Debbie Tambussi  
 TCL Chinese Theatre  
 Thumbprint Cellars  
 Tomatina  
 Trader Joe's  
 United Markets  
 Anne Varner  
 Tess Vertin  
 Vertly  
 Vin Antico  
 West Wind Solano Drive-In  
 Wine Country Cyclery

## HOLIDAY GIVING COMMUNITY PARTNERS

*The following generous community partners help make sure that every Side by Side client has a gift for the holidays.*

Book Passage  
 Kids Bike Lane  
 Marin Country Mart  
 Mill Valley Middle School  
 Secret Santa of Sonoma County/  
 Center for Volunteer and  
 Nonprofit Leadership  
 Temple Beth Shalom (San Leandro)  
 Zocalo Coffeehouse

## VOLUNTEERS

*Side by Side gratefully thanks the volunteers and organizations listed below who have spent countless hours helping with our 2021-22 events, office administration, and program support.*

Lisa Bakamis  
 Lisa Berardi  
 Karen Bischoff  
 Deanna Brock  
 Michael Broughton  
 Wendy Buscaglia  
 Shelley Cahan  
 Cakes4Kids  
 Cheryl Cinelli  
 Pat Collins  
 Lyndsey Conrad  
 Cassia Crall  
 Julie & Chris Dolan  
 Beth Drummey  
 Ben Edoukou  
 Extra Food  
 Yahaira Garcia-Perea  
 Jennifer Gotti  
 Paul and Debra Guerin  
 Rebecca & Ray Hathorn

Negar Irvani  
 Jessica Jones  
 Elizabeth Kulavic  
 Rafelina Maglio  
 Make it Home  
 Chase Martin  
 Wendy Martin  
 Shannon Matthiesen  
 Brian McDaniels  
 Jennifer Miller  
 Madison Munson  
 Jaime Ortiz  
 Bahar Ozgur  
 Margaret Paula  
 Joy Phoenix  
 John Ricco  
 Misty Rudolph  
 Salon B  
 Carole Shook  
 Evan Sjostrom  
 Jacqueline Spielberg  
 Garrett Stone  
 Rich Walcoff  
 Kiera Yee  
 Cati Young  
 Jeremy Yu

*In preparing this report, we made every effort to ensure that it is accurate and complete. If there is an error or omission, please accept our apologies and notify the development department at [development@sidebysideyouth.org](mailto:development@sidebysideyouth.org) or 415-457-3200 ext. 179 so we can correct our records. This report lists all cash gifts received between July 1, 2021 and June 30, 2022. Cash gifts made after that date will be published in next year's report. In-kind gifts associated with an event held during the 2021-22 fiscal year are included in this report regardless of the date of receipt.*

## WAYS TO GIVE [SidebySideYouth.org/ways-to-give](https://SidebySideYouth.org/ways-to-give)



**Monthly Giving** Switch to sustained monthly giving via credit card to provide Side by Side with regular support we can count on.



**Legacy Giving** Leave a lasting legacy by designating a future gift through your estate plan.



**Company Match** Increase the value of your gift by taking advantage of your workplace's matching gift program.



**Stock** Gifts of appreciated securities can be an easy way of making your charitable dollars go further.



**Vehicle Donations** Have an old car taking up space in your driveway or a need to free up your boat slip? Donate it to Side by Side!



**EScrip** Raise money for Side by Side each time you shop at United Markets, Woodlands Market, Oliver's or other local grocery stores!



**Give In Kind** Contributions of donated goods and services help stretch our program budgets that much further.



**Online Donations** You can make a gift securely online at [SidebySideYouth.org](https://SidebySideYouth.org) anytime, day or night.



300 Sunny Hills Drive, Bldg. 5  
San Anselmo, CA 94960

Return Service Requested

POSTAGE  
PAID



## Come Celebrate Alongside Us This Year

### TOWN HALL WITH SBS'S CEO, CHRISTINE GARCIA, AND NEW CHIEF PROGRAM OFFICER, JAMILA MCCALLUM

January 30, 2023

Offered via Zoom. Learn more at [SidebySideYouth.org/community-events](https://SidebySideYouth.org/community-events).

### MARIN VALENTINE'S BALL

February 11, 2023

Back at the Marin Civic Center this year, this is the hottest Valentine's Day ticket in town. The Ball benefits Side by Side, North Bay Children's Center and the Godmothers of Catholic Charities St. Vincent's School for Boys.



### GLENWOOD GUILD'S BINGO NIGHT

April 29, 2023

Returning from its COVID-hiatus, BINGO Night at the Marin Yacht Club raises funds to support Side by Side's Irene M. Hunt School.

### BANK OF MARIN GOLF TOURNAMENT

June 26, 2023

June wouldn't be the same without this signature tourney hosted at the exclusive Meadow Club in Fairfax, now in its 29th year!

### REACH FOR THE STARS GALA

September 16, 2023

Plans for an elegant evening on a private estate in Marin are being hatched...watch for more information about our biggest fundraiser and best party of the year!

For more information about any of these events, visit [SidebySideYouth.org/events](https://SidebySideYouth.org/events)